

PEX BALL VALVE WITH DRAIN F1807



TECHNICAL DATA

DESCRIPTION:
Pex Ball Valve with Drain F1807

CONSTRUCTION:
Lead Free Brass Body and Cap, PTFE Ball Seat, Brass Stem and Drainable Nut, EPDM O-ring, Steel Handle and Nut, NBR Rubber Seat.

FEATURE:
400 WOG
Max. Working Pressure: 600Psi
Temperature Range: -20°F to 300 °F
Lead Free Brass Ball (1/2") or SS304 Ball (3/4"-1")
Blow-Out Proof Stem Design

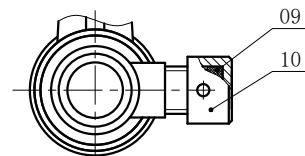
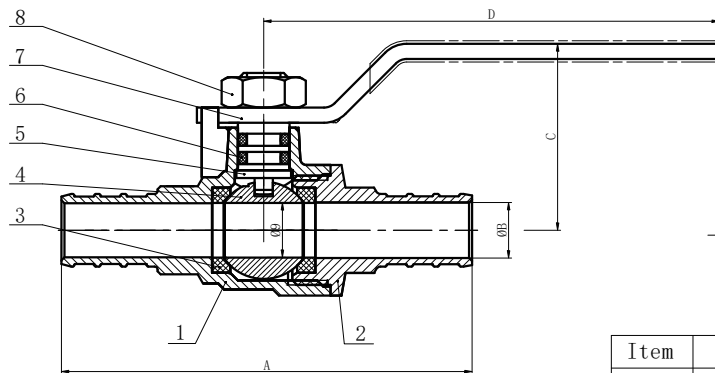
CODE APPROVALS:
CUPC, NSF-61, NSF-372 Certified.

PART #	DESCRIPTION	FINISH
BV-PEX-WD-12	1/2" PEX BALL VALVE WITH DRAIN F1807	FORGED
BV-PEX-WD-34	3/4" PEX BALL VALVE WITH DRAIN F1807	FORGED
BV-PEX-WD-1	1" PEX BALL VALVE WITH DRAIN F1807	FORGED



Country of origin: Vietnam

ROUGH IN DRAWING



Dimension					
Size	A	ØB	C	D	ØE
1/2"	2.661	0.350	1.209	2.953	0.354
3/4"	2.776	0.530	1.311	2.953	0.532
1"	3.441	0.710	1.870	4.331	0.748

Item	Part	Material
1	Body	Lead Free Brass
2	End Cap	Lead Free Brass
3	Ball Seat	PTFE
4	Ball	1/2:Lead Free Brass 3/4-1:SS304
5	Stem	Brass
6	O-ring	EPDM
7	Handle	Steel
8	Nut	Steel
9	Rubber Seat	NBR
10	Drainable Nut	Brass

ALL DIMENSIONS SHOWN ARE NOMINAL