

PRESS STRAIGHT STOP QUARTER TURN



TECHNICAL DATA

DESCRIPTION:
Press Straight Stop 1/2" X 3/8" Quarter Turn Lever Handle

CONSTRUCTION:
Solid Brass Body, Ball and Stem, Plastic Handle, NBR O-ring, SS Screw, PTFE Seat

FINISH:
Chrome Plated finish

CODE APPROVALS:
UPC approved. Complies w/ NSF-61

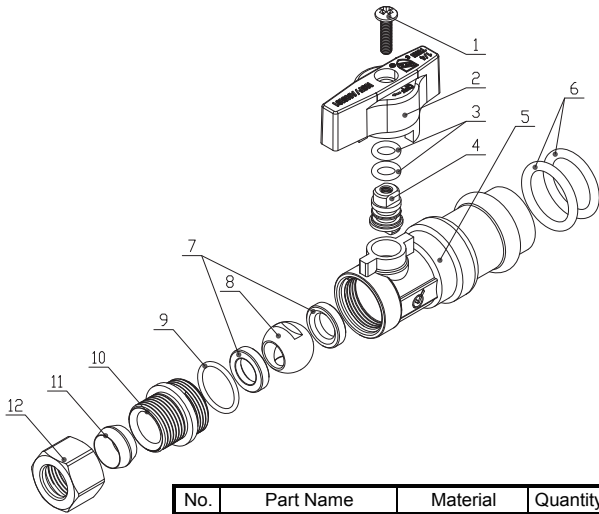
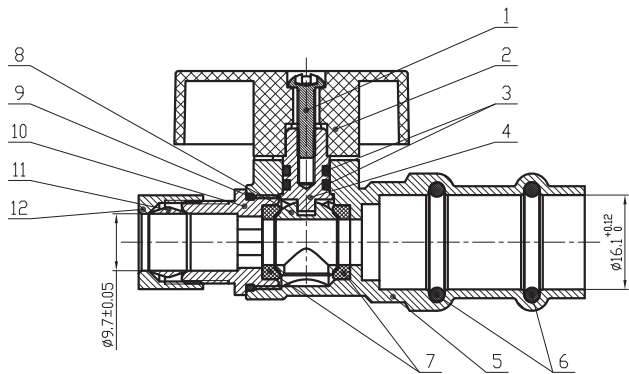
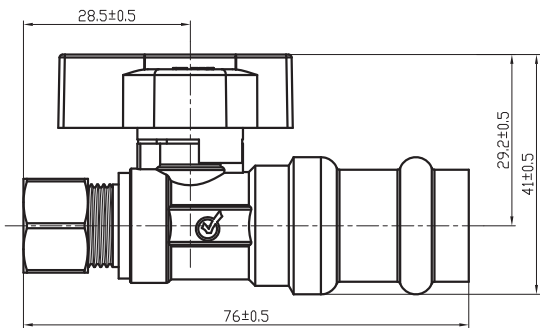
PACKAGING:
Color Box w/ Barcode
Master Carton: 100

| PART# | DESCRIPTION | FINISH |
|-----------|--|--------|
| SS-PRS-QT | Press Straight Stop 1/2" X 3/8" Quarter Turn Lever Handle | Chrome |



Country of origin: China

ROUGH IN DRAWING



| No. | Part Name | Material | Quantity |
|-----|--------------------|-----------------|----------|
| 1 | Screw | Stainless Steel | 1 |
| 2 | Handle | ABS,plated | 1 |
| 3 | O-Ring | NBR | 2 |
| 4 | Stem | Brass C46400 | 1 |
| 5 | Body | Brass C46500 | 1 |
| 6 | Press O-Ring | EPDM | 2 |
| 7 | Seat | PTFE | 2 |
| 8 | Ball | Brass C46500 | 1 |
| 9 | O-Ring | NBR | 1 |
| 10 | End Adapter | Brass C46500 | 1 |
| 11 | Compression Sleeve | H62 | 1 |
| 12 | Compression Nut | HBP57-3 | 1 |

ALL DIMENSIONS SHOWN ARE NOMINAL

Meets requirements for NSF-61
Approved