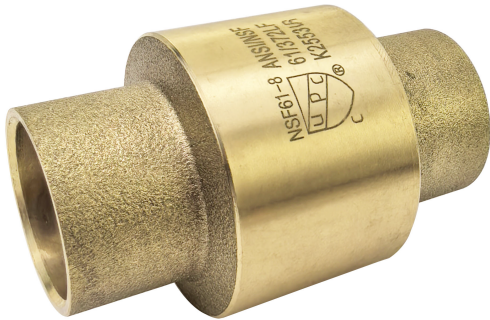


SWEAT SPRING BRASS CHECK VALVE



TECHNICAL DATA

DESCRIPTION:
Sweat Spring Brass Check Valve

FEATURE:
Connections: sweat
Lead free brass construction
Spring loaded
Horizontal or vertical installation

CODE APPROVALS:
UPC is listed by the third party
Complies w/NSF-61

PART #	DESCRIPTION
CV-SPRG-SWT-12	1/2" SWEAT SPRING BRASS CHECK VALVE
CV-SPRG-SWT-34	3/4" SWEAT SPRING BRASS CHECK VALVE
CV-SPRG-SWT-1	1" SWEAT SPRING BRASS CHECK VALVE
CV-SPRG-SWT-114	1-1/4" SWEAT SPRING BRASS CHECK VALVE
CV-SPRG-SWT-112	1-1/2" SWEAT SPRING BRASS CHECK VALVE
CV-SPRG-SWT-2	2" SWEAT SPRING BRASS CHECK VALVE



Country of origin: China

ROUGH IN DRAWING

ALL DIMENSIONS SHOWN ARE NOMINAL

No.	Name	Material	Qty
5	Spool Gasket	Silicone Rubber	1
4	Spool	Brass	1
3	Spring	Steel	1
2	Bonnet	Brass	1
1	Body	Brass	1

No.	Size	A	B	L	L1
6	2" X 2"C	$\Phi 54^{+0.16}_{+0.06}$	$\Phi 78$	114.5	34.3
5	1-1/2" X 1-1/2"C	$\Phi 41.3^{+0.15}_{+0.05}$	$\Phi 67$	92	24
4	1-1/4" X 1-1/4"C	$\Phi 35^{+0.15}_{+0.05}$	$\Phi 59.5$	81	22
3	1" X 1"C	$\Phi 28.7^{+0.05}_{-0.04}$	$\Phi 43.5$	71	20
2	3/4" X 3/4"C	$\Phi 22.3^{+0.07}_{-0}$	$\Phi 38.5$	63.3	16.5
1	1/2" X 1/2"C	$\Phi 16^{+0.02}_{-0.05}$	$\Phi 32$	56	13